



Child Find

Presented By: SEALK12



Special Education Advocates League SEALK12

- 501(c)(3) Not-For-Profit Organization
- www.sealk12.org
- sealk12@outlook.com
- call or text 253.260.2066

We are stewards dedicated to shaping educational opportunity so that every student feels empowered and participates in an inclusive and equitable world.

These core values start within SEALK12 and drive what we do every day.





Important Information

DISCLAIMER: We are not attorneys and the information being shared should never take the place of consulting with an attorney or hiring an attorney. We are sharing our experiences.

The information we provide is by no means inclusive and should not be considered as such. Content is specific to the State of Washington.

COPYRIGHT: For information regarding reproduction of any SEALK12 materials, please communicate with SEALK12.



CONTENTS

1. What is Child Find?
2. Who is responsible for Child Find?
3. Who is Child Find for?
4. Who can make a Child Find referral?
5. How do you make a Child Find referral?
6. What happens after the referral is made?
7. Why is Child Find important?

WHAT IS
CHILD FIND?





All students are
general education
students.

Some students have additional supports and services through an Individualized Education Program (IEP) or 504 Plan.



SEALK12© 2024



Child Find is for all students who might need additional supports.

Child Find is how the special education students are 'found'.

WHAT IS CHILD FIND?

A school district has a duty to identify all students residing in their district who might need special education services.

This duty is called Child Find.





Child Find is part of the Individuals with Disabilities Education Act (IDEA) and is for students birth to 21.

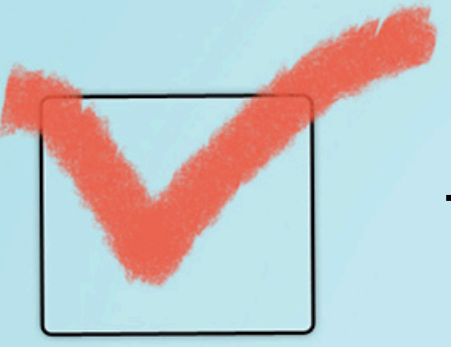


**Child Find
is a
Duty**

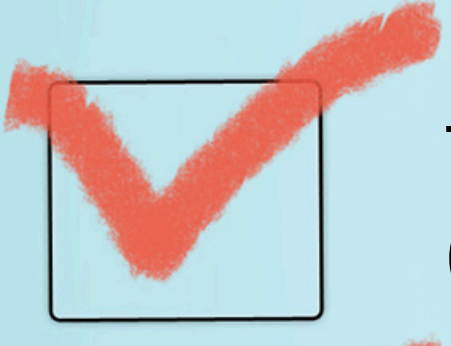
Examples of When to Use Child Find



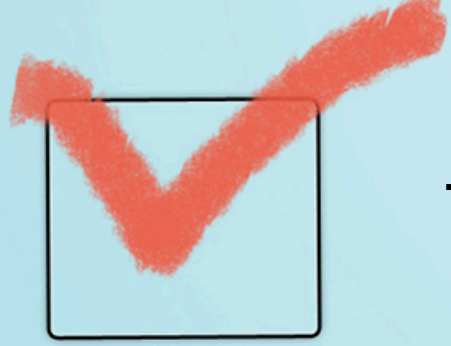
The student has a diagnosis.



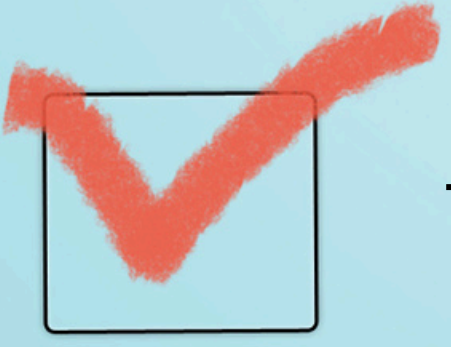
The student doesn't have a diagnosis.



The student is struggling
(behavior and/or academics).



The student is absent often.



The student has several disciplinary referrals.



WHO IS
RESPONSIBLE
FOR
CHILD FIND?





CHILD FIND and the LAW

The Individuals with Disabilities Education Act (IDEA) requires all states to have policies and procedures in place to ensure that all children with disabilities who are in need of Special Education Services and Related Services are **IDENTIFIED, LOCATED, and EVALUATED.**

A wire mesh pencil holder filled with colorful pencils, a stack of books, and a red apple on a wooden desk.

COMMUNITY

School districts are required to have outreach efforts to inform the community about Child Find as people may not know that help is available, and at no cost to the parent.



CHILD FIND

Code of Federal Regulations
34 CFR 300.111



Washington Administration Code
WAC 392-172A-02040

34 CFR 300.111 (a)(1)

The State must have in effect policies and procedures to ensure that – (i) All children with disabilities residing in the State, including children with disabilities who are homeless or are wards of the State, and children with disabilities attending private schools, regardless of the severity of their disability, and who are in need of special education and related services, are identified, located, and evaluated.



Child Find

“Finding the children who need special education and related services is a basic function of the special education system. Without an effective child find process in place, the structure of the entire system is compromised.” - OSPI

www.sealk12.org



WHO IS
CHILD FIND
FOR?





CHILD FIND IS NOT JUST PRESCHOOL.

Child Find is Birth to 21.



ALL CHILDREN

School, Homeschool,
Private School,
Without a Home,
Foster Care,
Migrant

A Child Find referral can be made for a student who...

01 has a medical concern(s)

02 has a cognitive or academic concern

03 has social, emotional, behavioral, or adaptive concerns

04 has sensory concerns

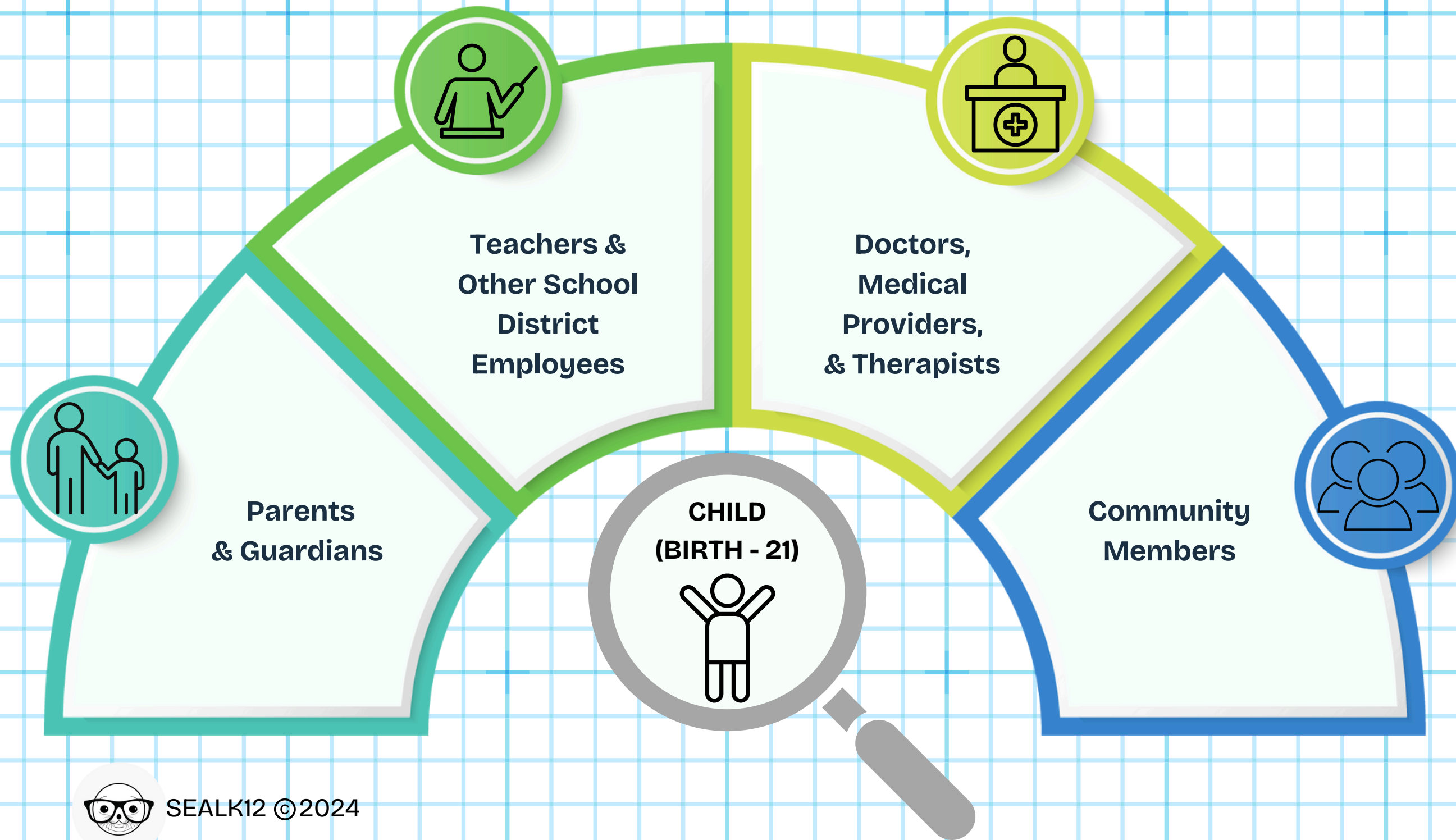
05 has fine motor or gross motor concerns

**WHO CAN
MAKE A
CHILD FIND
REFERRAL?**



CHILD FIND

WHO CAN REFER A CHILD?



HOW DO YOU
MAKE A
CHILD FIND
REFERRAL?



MAKE A REFERRAL

- Make a referral in writing.
- Include why you suspect a disability.
- Include any supporting documentation.



CHILD FIND REFERRAL

WAC 392-172A-03005

Referral and timelines for initial evaluations. (1) A parent of a child, a school district, a public agency, other persons knowledgeable about the child may initiate a request for an initial evaluation to determine if the student is eligible for special education. The request will be in writing, unless the person is unable to write.



WHAT
HAPPENS
AFTER A
REFERRAL IS
MADE?





CHILD FIND REFERRAL initial evaluation



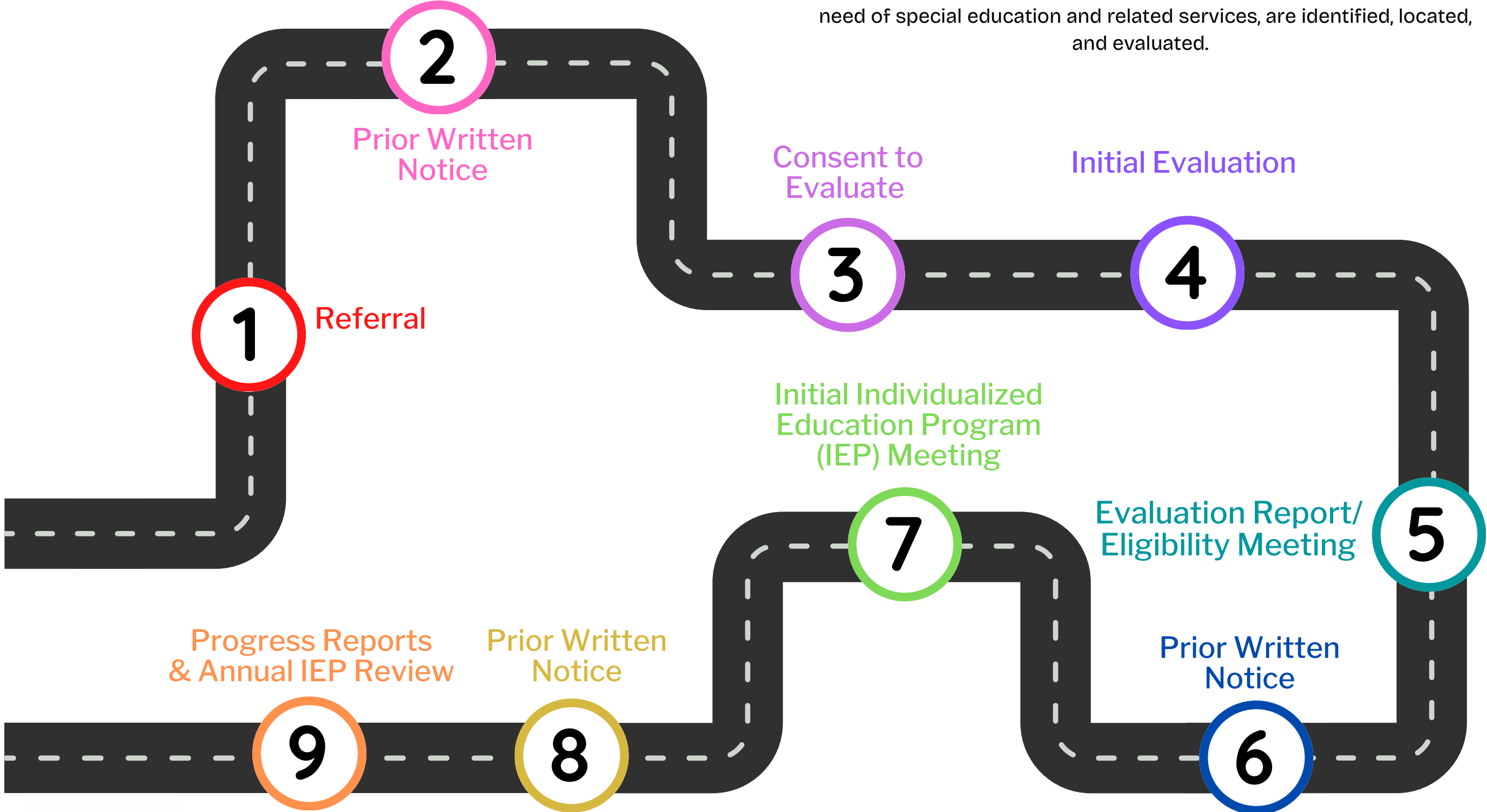
Code of Federal Regulations
34 CFR 300.301



Washington Administration Code
WAC 392-172A-03005

A GUIDE TO CHILD FIND

34 CFR 300.111 (a)(1) – The State must have in effect policies and procedures to ensure that – (i) All children with disabilities residing in the State, including children with disabilities who are homeless or are wards of the State, and children with disabilities attending private schools, regardless of the severity of their disability, and who are in need of special education and related services, are identified, located, and evaluated.





Initial Referral for Special Education Checklist

(See Also: Child Find)

- 1** Does the referral include concerns?

- 2** Does the referral include the student's diagnosis or suspected disability?

- 3** Does the referral include any supporting documentation?

- 4** When was the referral sent?

- 5** Did the school send, within 25 school days of receiving the referral, a Prior Written Notice that includes their decision whether or not evaluate?

- 6** Did the school include a copy of the Procedural Safeguards?

- 7** When will the evaluation consent papers be sent?





The district must make a decision whether or not to evaluate. They will evaluate if they suspect a disability. Or they can deny the request to evaluate.

The decision must be included in a Prior written Notice and sent to the parent. A copy of the Procedural Safeguards is also sent to the parent at this time.

DEADLINE

Once a school district receives a referral for special education, they must send the parent a Prior Written Notice with their decision within 25 school days.



WHY IS
CHILD FIND
IMPORTANT?





CHILD FIND and FAPE

Under the Individuals with Disabilities Act (IDEA), every student with a disability is entitled to a Free Appropriate Public Education (FAPE).

Child Find helps ensure FAPE. Students with disabilities depend on Child Find to receive special education and related services.

SOME BENEFITS OF CHILD FIND

- Free Appropriate Public Education (FAPE)
- Behavior Intervention
- Academic Performance
- Compliance with American with Disabilities Act (ADA)
- Compliance with US Department of Education and the Individuals with Disabilities Act (IDEA)
- Compliance with Washington Office of Superintendent of Public Instruction (OSPI)



Looking at Case Law



ABSENTEEISM & CHILD FIND

“While the Student’s absenteeism may have been a factor to consider, it was not necessarily a reason to delay an evaluation as the District did not consider the potential connection to the Student’s disability. For these reasons, OSPI finds a violation and the District will be required to conduct training.”

OSPI Community Complaint 24-02



BEHAVIOR & CHILD FIND

“OSPI finds a violation with respect to child find and referral procedures, specifically referral procedures related to documenting the referral and providing prior written notice.”

OSPI Community Complaint 23-134

CHILD FIND RECAP





CHILD FIND



Identify

- Any child - birth to 21.
- Anyone can make a referral.
- More than learning disability.



Locate

- School districts must have procedures and policies in place to actively seek student's who may benefit from special education and related services.
- Includes homeless, foster care, and medical facility.



Evaluate

- Evaluate in all areas of suspected disability.
- Ensure student's access to FAPE.
- No medical diagnosis necessary.
- Initial requests/referrals for Child Find evaluations automatically trigger IDEA timelines and procedures.





CHILD FIND AT A GLANCE

- Part of the IDEA
- Duty for schools to identify, locate, and evaluate children with disabilities.
- ALL Children : Birth to 21
- Parents, teachers, doctors, and community can make a referral for special education & related services.
- Schools have 25 school days to decide whether or not they will evaluate the student once a referral is received.



T H A N K Y O U